

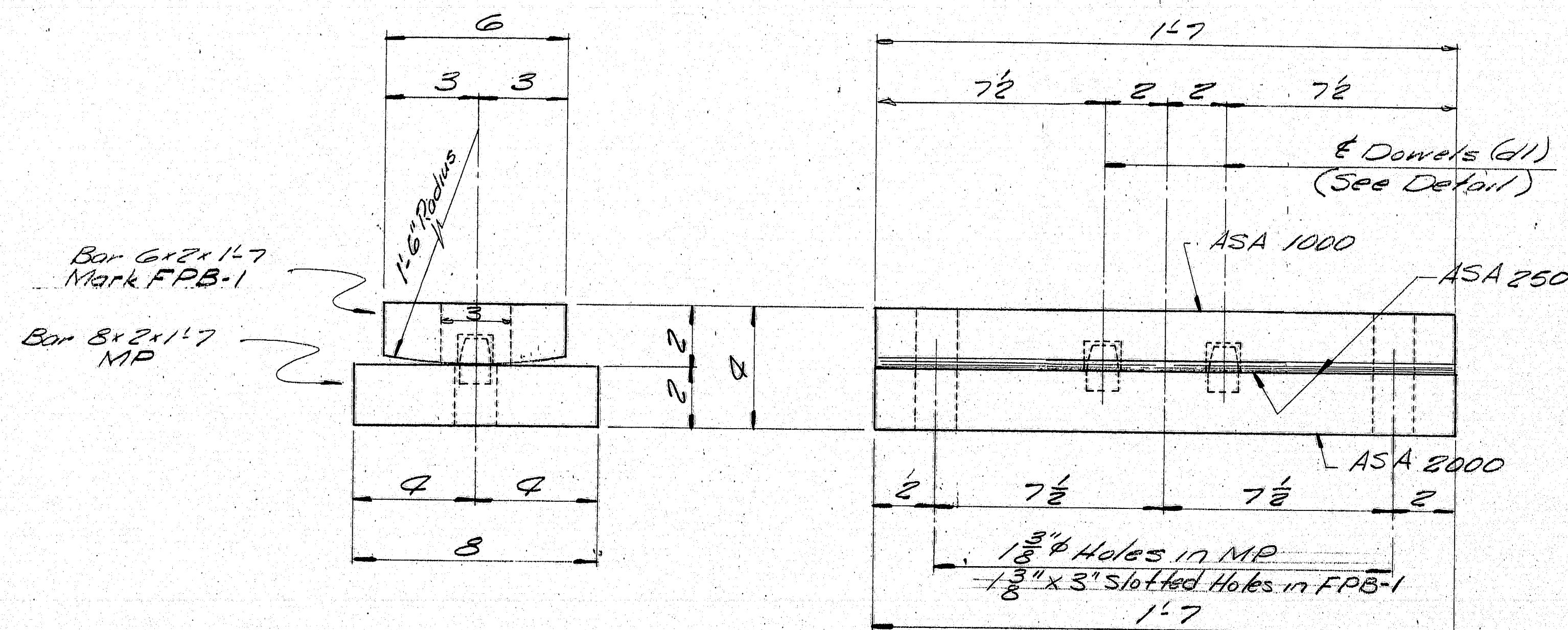
All dimensions are Horizontal

FIELD BOLTS:- 8" ϕ H.S. BOLTS TYPE I (A325)

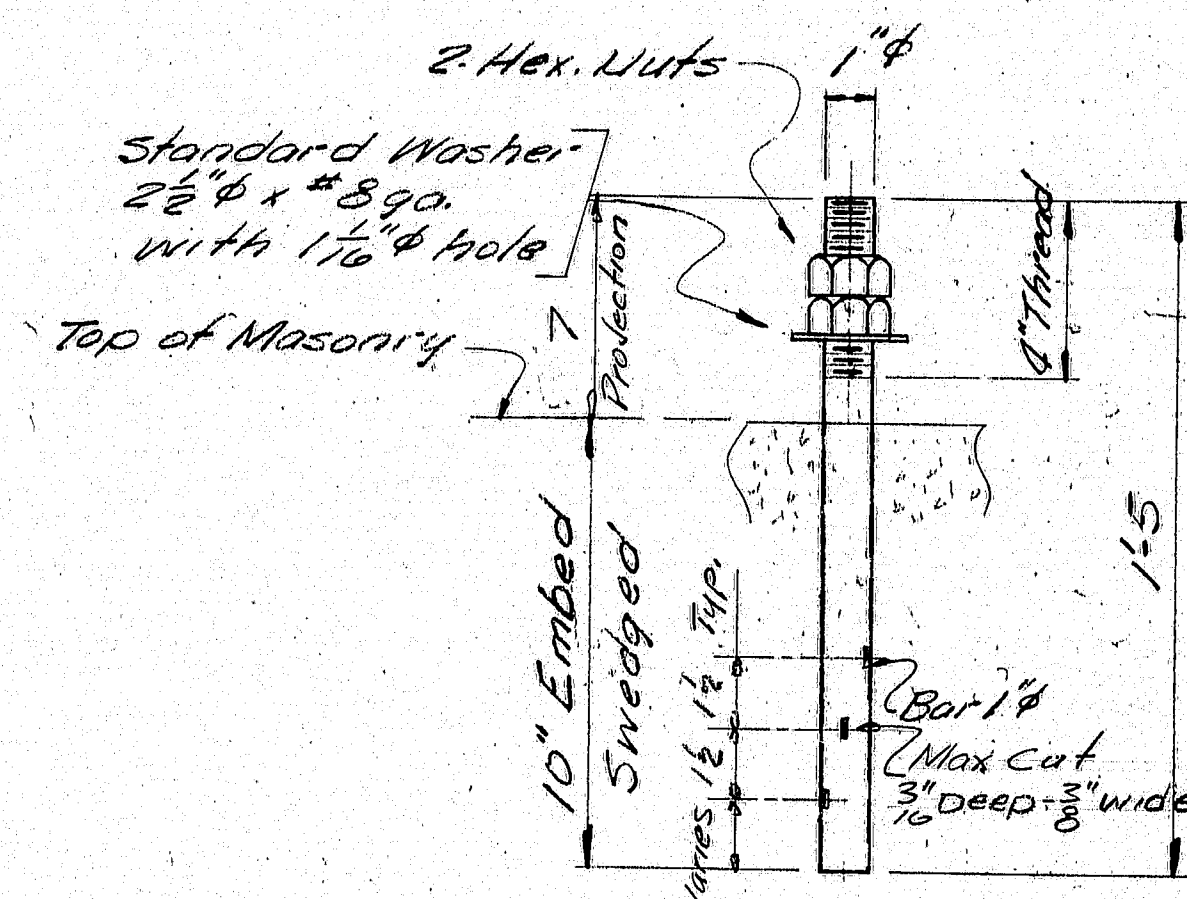
FRAMING PLAN

PRINT DIST			JOB: BANCROFT & MARTIN INC. SOUTH PORTLAND, MAINE 04106 MARSH STREAM BRIDGE PROSPECT, MAINE. CUSTOMER: REED & REED DESIGNER: MAINE DEPT. OF TRANS.
2P	11-27-78	ADD.	
2-2APR	1-15-79	ADD.	
2P	1-15-79	FIELD	
2P	1-23-79	SHOP	
REV.			
CHECKED			
DRAWN	12-28-78	H.L.	ORDER NO. 578-71 JOB NO. E1 DRAWING NO.

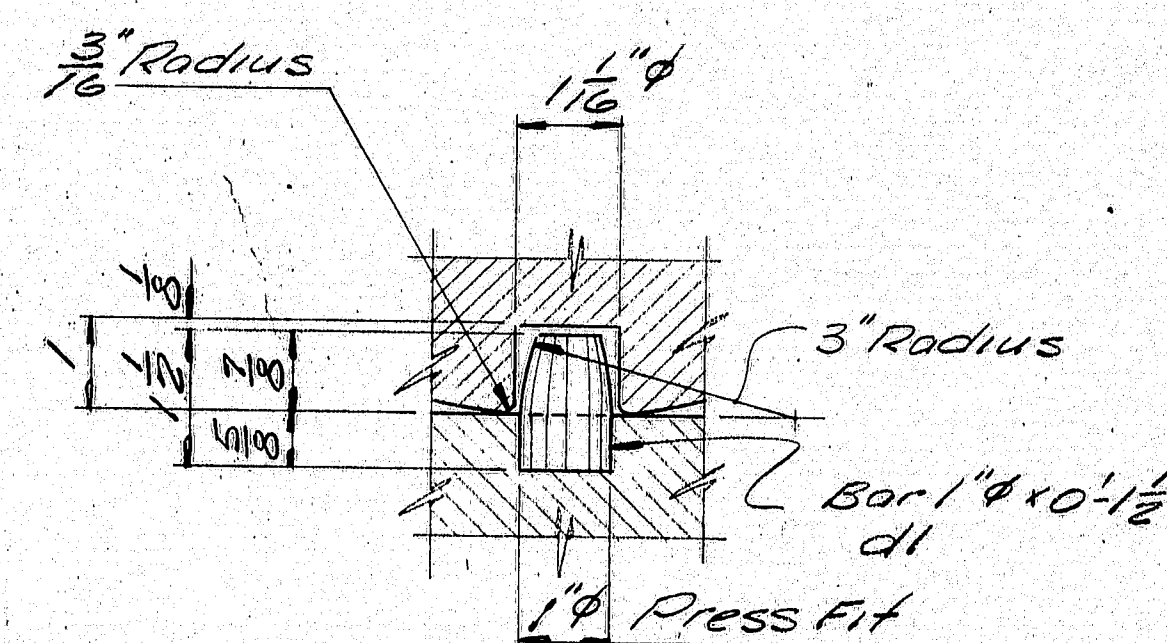
160-68



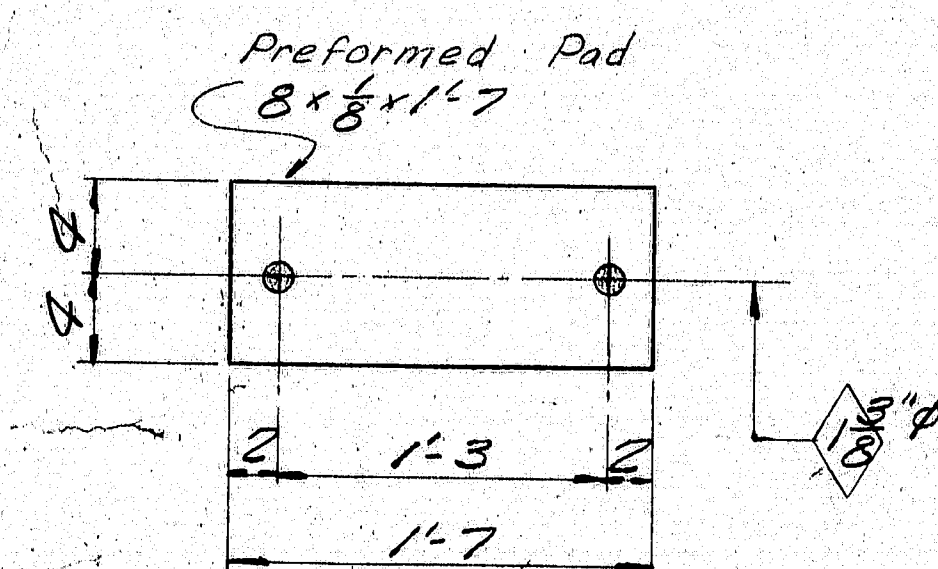
FIXED PEDESTAL ASSEMBLY
FPB-1 (MOD.) 5 REQ'D. @ ABUT #1



ANCHOR BOLT ABI
10 REQ'D.



DOWEL DETAIL



PREFORMED PAD
FPI 5 REQ'D. @ ABUT #1

PAINT NOTE:

No paint on Anchor bolts - Oil tds.

SHIP BILL OF MATERIAL S78-71 DWG. NO. 51-1							
MARK	NO.	MARK	SHAPE	LENGTH	WT.	ITEM No.	REMARKS
FPB-1	5		Bar 6x2	14.7		1/A	
MP	5		Bar 8x2	14.7		1/H	
		10 d1	Bar 1 inch	0 1/2		1/E	
ABI	10		Bar 1 inch	15		1/K	Wedge
		20 Shop	1 inch Hex Nut			1/L	
Field	10		1 inch Washer			1/M	5/16 inch washer 2 1/2 inch O.D. with 1/2 inch hole
FPI	5		Pad 8x14.7	14.7		1/N	Preformed Pad, Reg. No. 11621

ITEM 504.70
 PROJECT No. 742 (504)

Sole plates "FPB-1" to be field welded to stringers.

Bearing material to be ASTM A36, Anchor bolts to be A36.

SHOP CONNECTIONS:
 FIELD CONNECTIONS:
 HOLES: As noted
 PAINT: Blast clean SSPC-SP6 spec. and as noted.
 CARBO-ZINC II.

BEARING PEDESTAL DETAIL

Binacraft & Martin Inc.
 South Portland 7, Maine

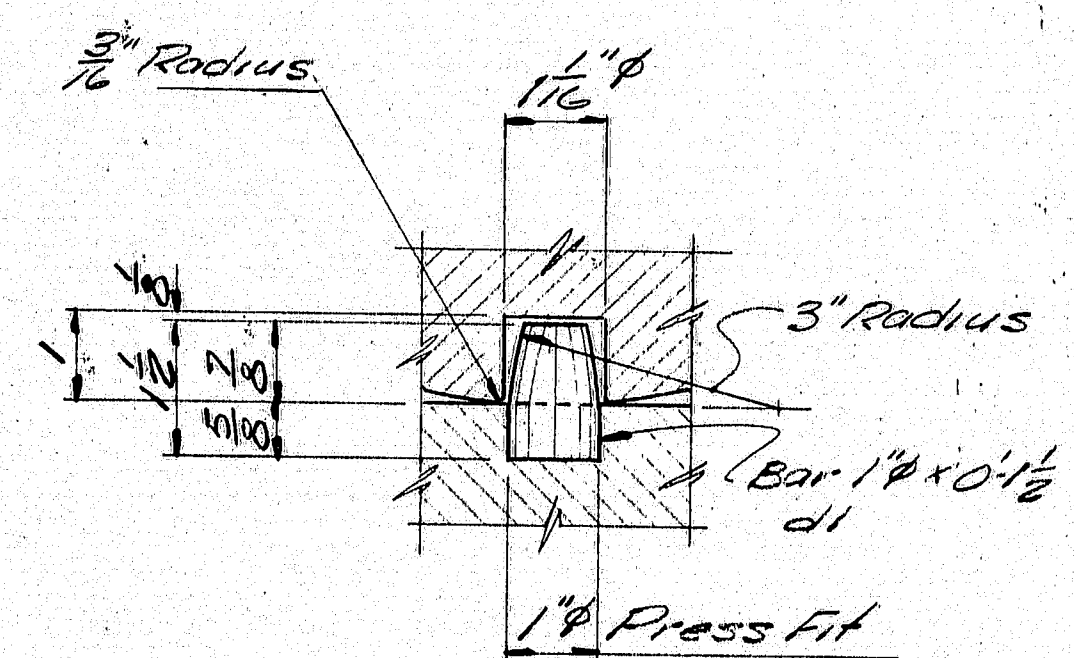
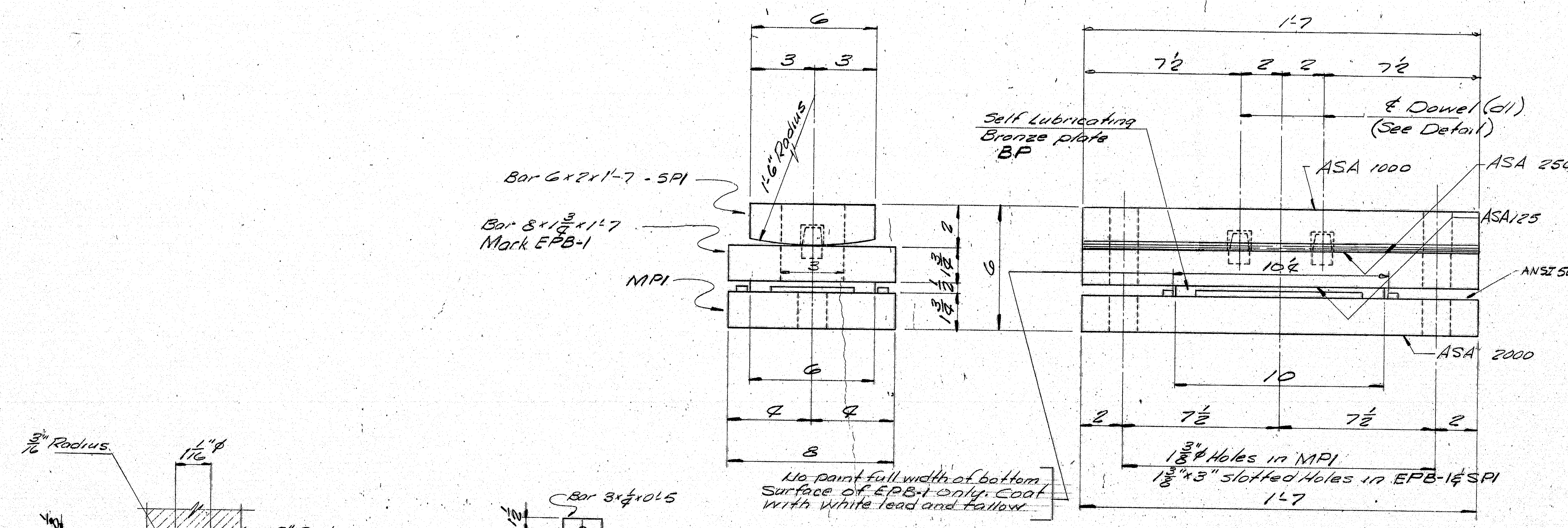
MARSH STREAM BRIDGE
PROSPECT, MAINE.

CUSTOMER REED & REED
 DESIGNER MAINE DEPT. TRANS.

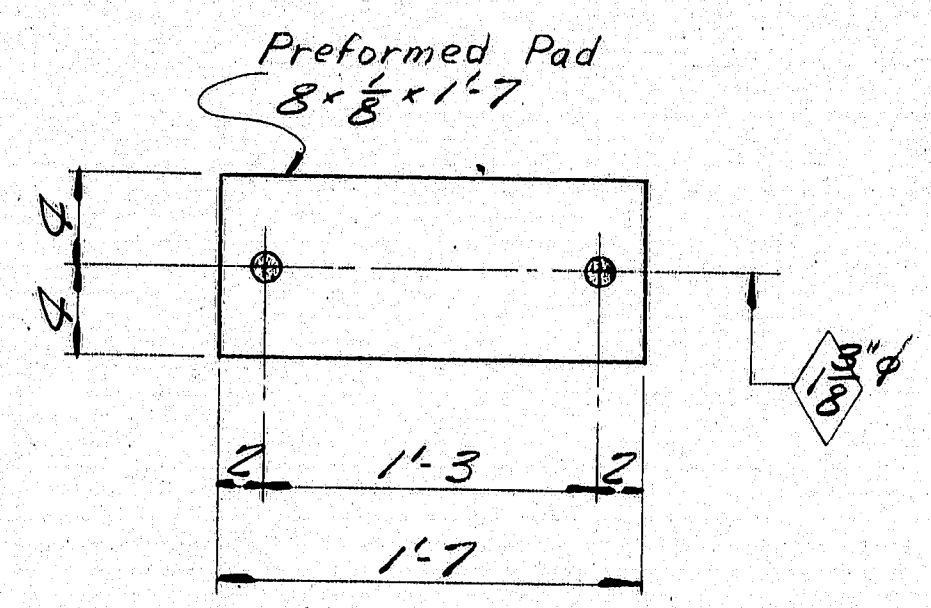
JOB NO. S78-71 DWG. NO. 51-1

2 P	1-15-79	FIELD
3 P	1-15-79	SHOP
2 Series	1-15-79	Final App.
DRAWN	10-20-78	H.L.
REVISION	12-27-78	RGM
REVISION		
REVISION		

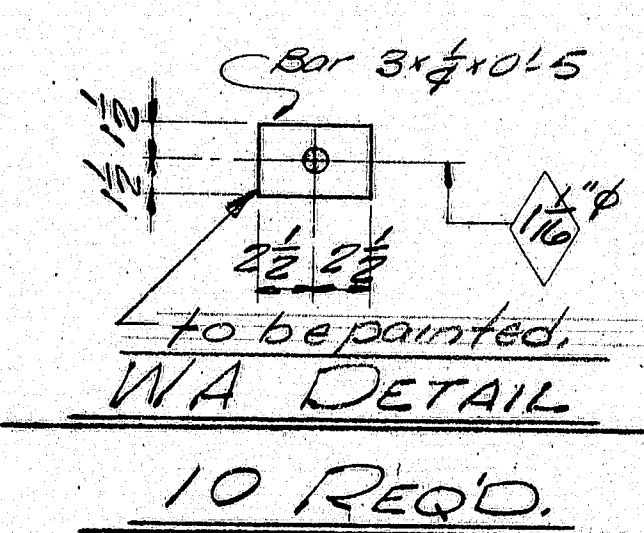
160-69 #5



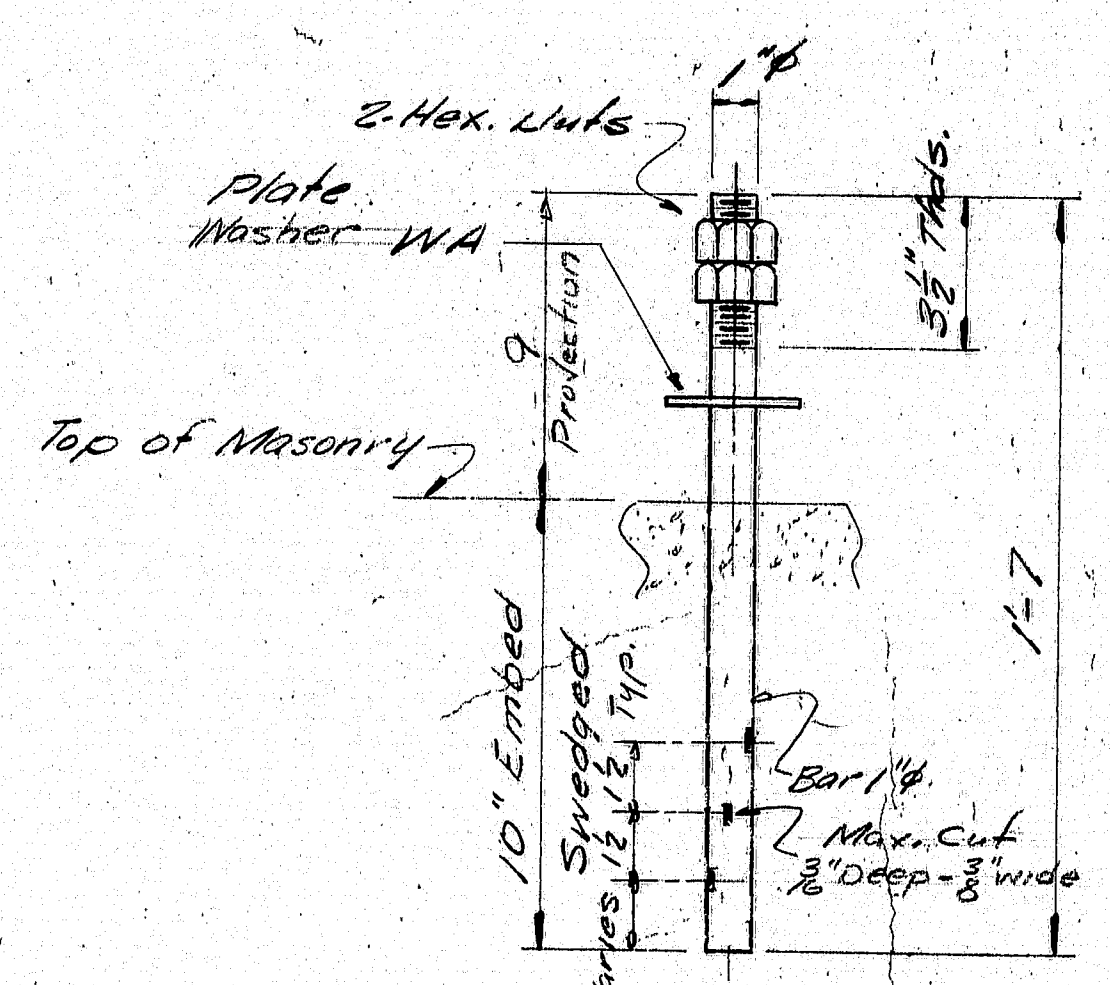
DOWEL DETAIL



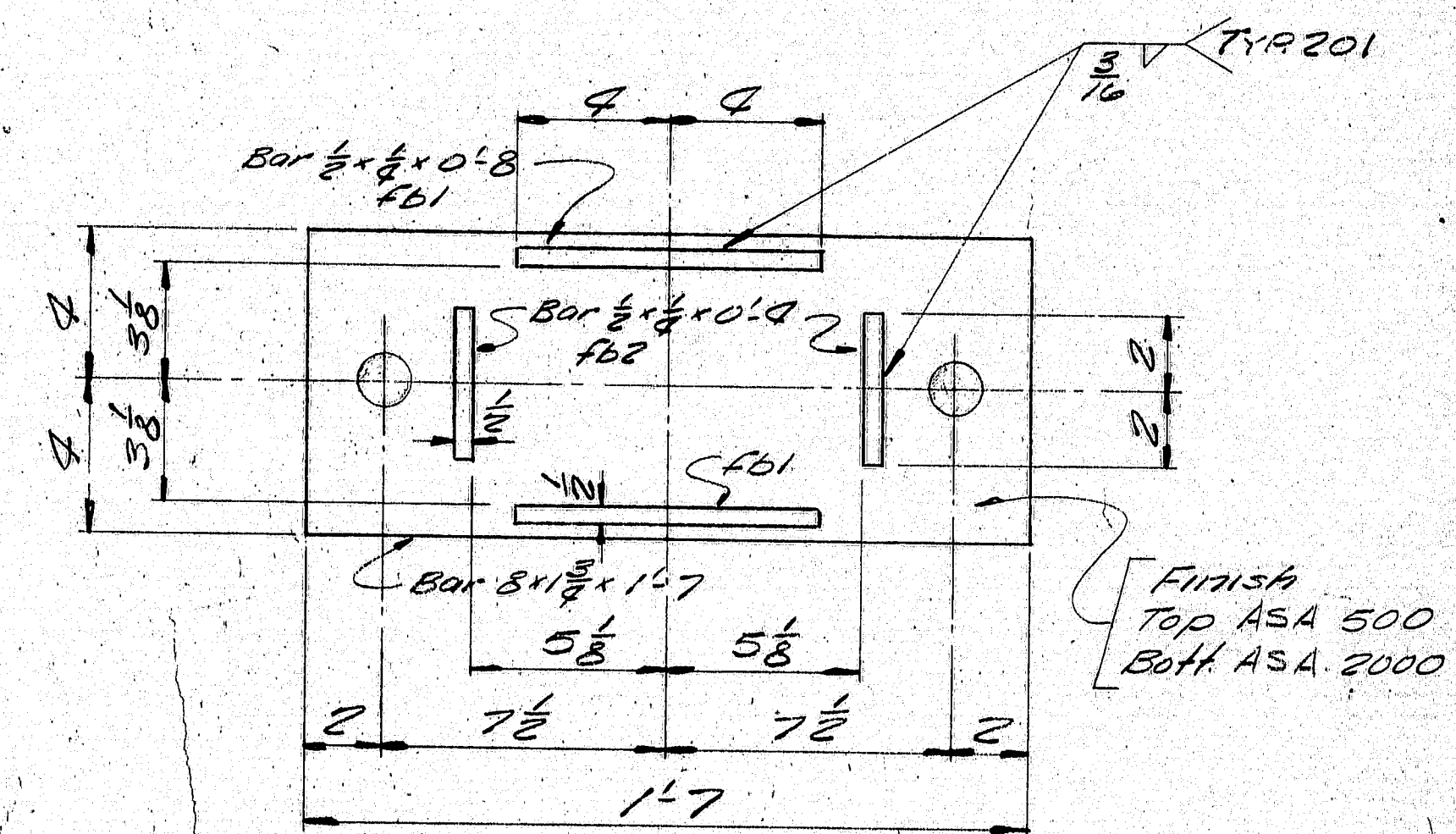
PREFORMED PAD
FPI 5 REQ'D. @ ABUT. #2



EXPANSION PEDESTAL ASSEMBLY
EPB-1 (MOD.) 5 REQ'D. @ ABUT. #2



ANCHOR BOLT AB2
10 REQ'D.



MP DETAIL
5 REQ'D.

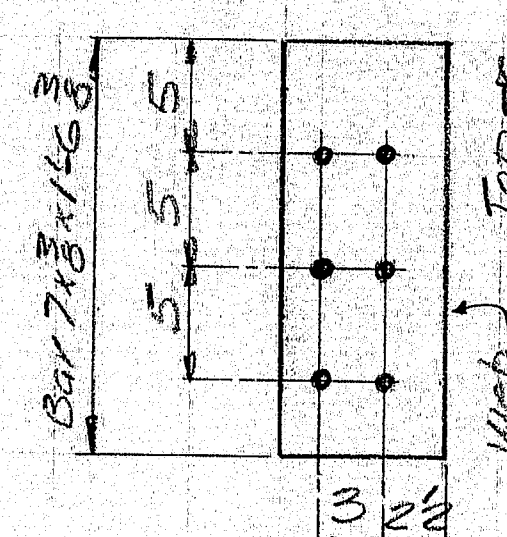
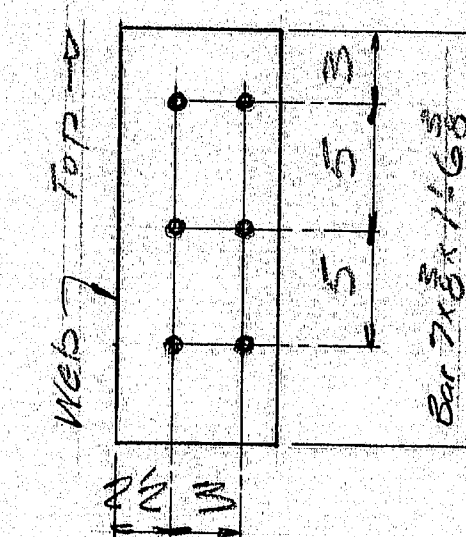
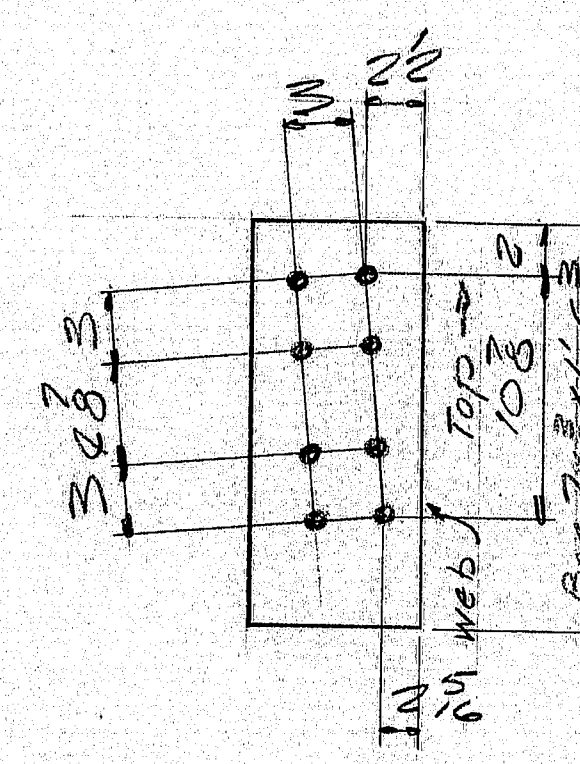
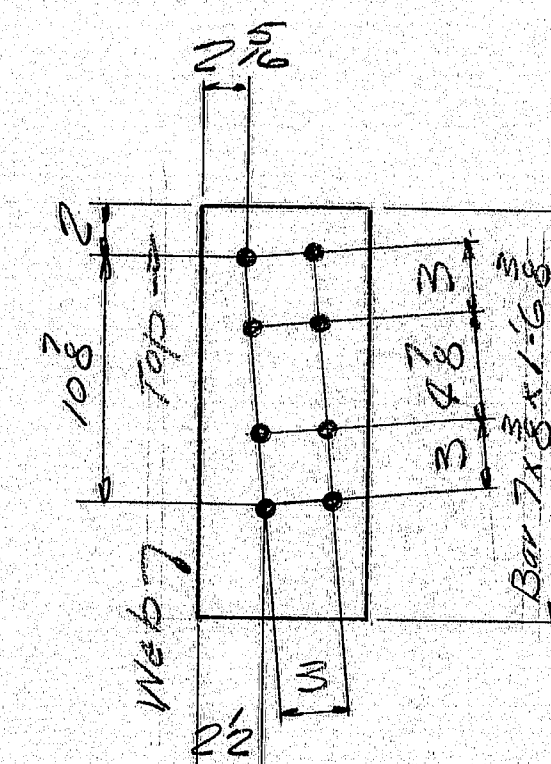
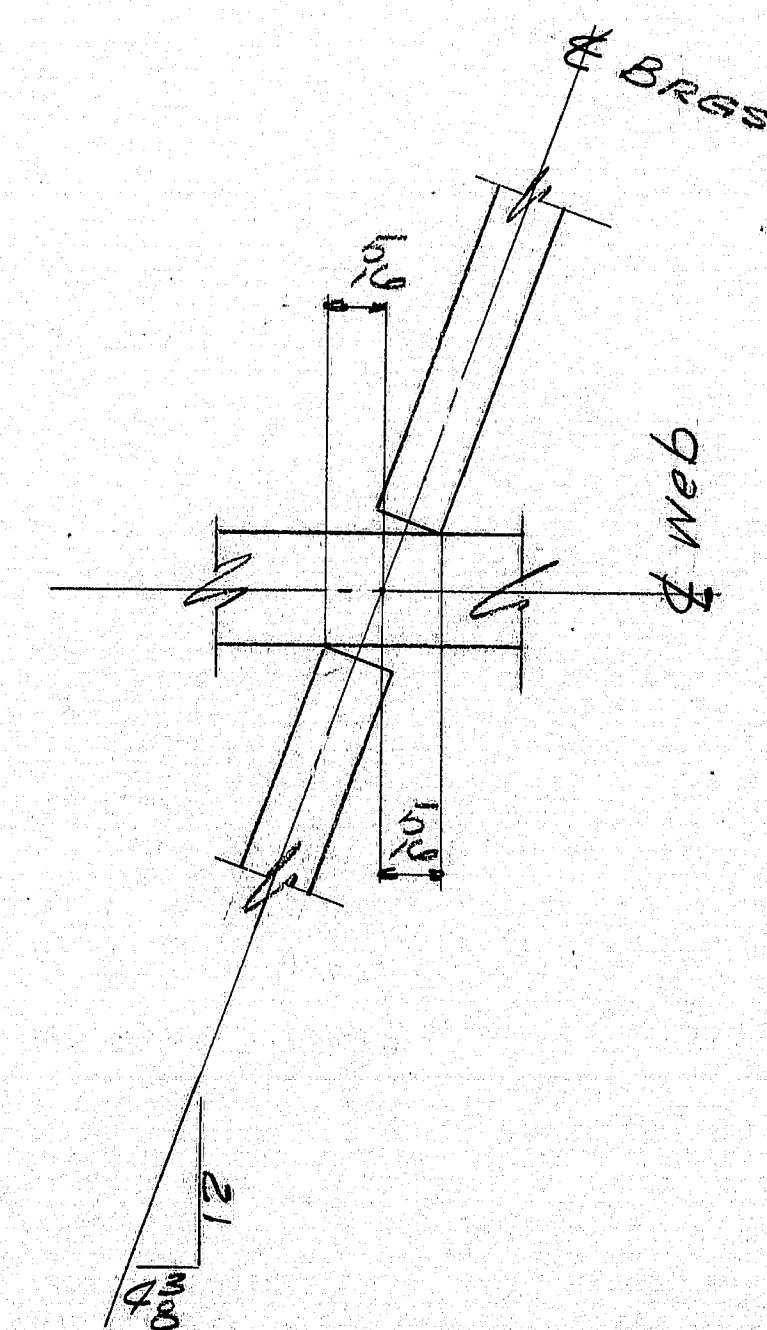
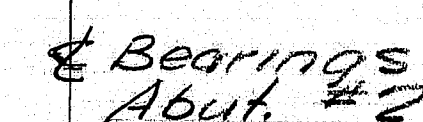
PAINT NOTE:

No paint on self Lubricating bronze plate.

No paint on area in contact with bronze plate, coat with mixture of white lead and talow - see Above.

No paint on Anchor bolts - oil kids.

SHIP		BILL OF MATERIAL 578-71						DWG. NO. 51-2	
MARK	NO.	MARK	SHAPE	LENGTH	WT.	ITEM NO.	REMARKS		
EPB-1	5		Bar 8x1 1/4	1 7		1/8			
MPI	5		Bar 8x1 1/2	1 7		1/8			
SP1	5		Bar 6x2	1 7		1/8			
BP	5		12 6x 1/2	0 10		1/8	Self Lubricating Bronze Plate Reg. No. 11618		
	10	d1	Bar 1" d	0 1 1/2		1/8			
	10	f61	Bar 1/2 x 1/2	0 8		1/8			
	10	f62	Bar 3/4 x 1/2	0 9		1/8			
AB2	10		Bar 1" d	1 7		1/8	bridged		
	20	shop	1" Hex Nut			1/8			
WA	10		Bar 3x1 1/2	0 5		1/8	Plate washer		
FPI	5		Pad 8x8	1 7		1/8	Preformed Pad Reg. No. 11621		
ITEM 502.70 Project No: 722 (502)									
Sole plates "SP1" to be field welded to stringers.									
Bearing material to be ASTM A36. Anchor bolts to be A36.									
SHOP CONNECTIONS: See Welding Procedures.									
FIELD CONNECTIONS:									
HOLES: 1/8" and as noted									
PAINT: CARBO-ZINC 11.0 EQUAL and as noted.									
Blast-clean-SSPC-SP6									
BEARING PEDESTAL DETAIL									
Bancroft & Martin Inc.									
South Portland 7, Maine									
3P	1-15-79	SHOP							
2R	1-15-79	FIELD							
2-5 Sep 80	1-15-79	FINAL APP.							
DRAWN	10-20-78	H.L.							
CHECKED	12-27-78	RGM							
REVISION									
REVISION									
JOB NO. 578-71 DWG. NO. 51-2									



8	dp1	Bar 7x	1	6	1/5		
8	dp?	DO	1	6	1/5		A30
8	d3	DO	1	6	1/5		A30
8	d4	Bar 7x	1	6	1/5		A30

STEEL: ASTM. ☐ A36 ☒ A572 GR50 ☐ A588 GR1 ☒ Unless Noted ☐

WELDING ELECTRODE: ☐ E70 ☒ See Welding Proc. ☐ None

SHOP CONN: ☐ Bolted ☒ Welded ☐ None

FIELD CONN: ☒ Bolted ☒ Welded ☐ None 3/4 H.S. Bolt (A325) Type 1

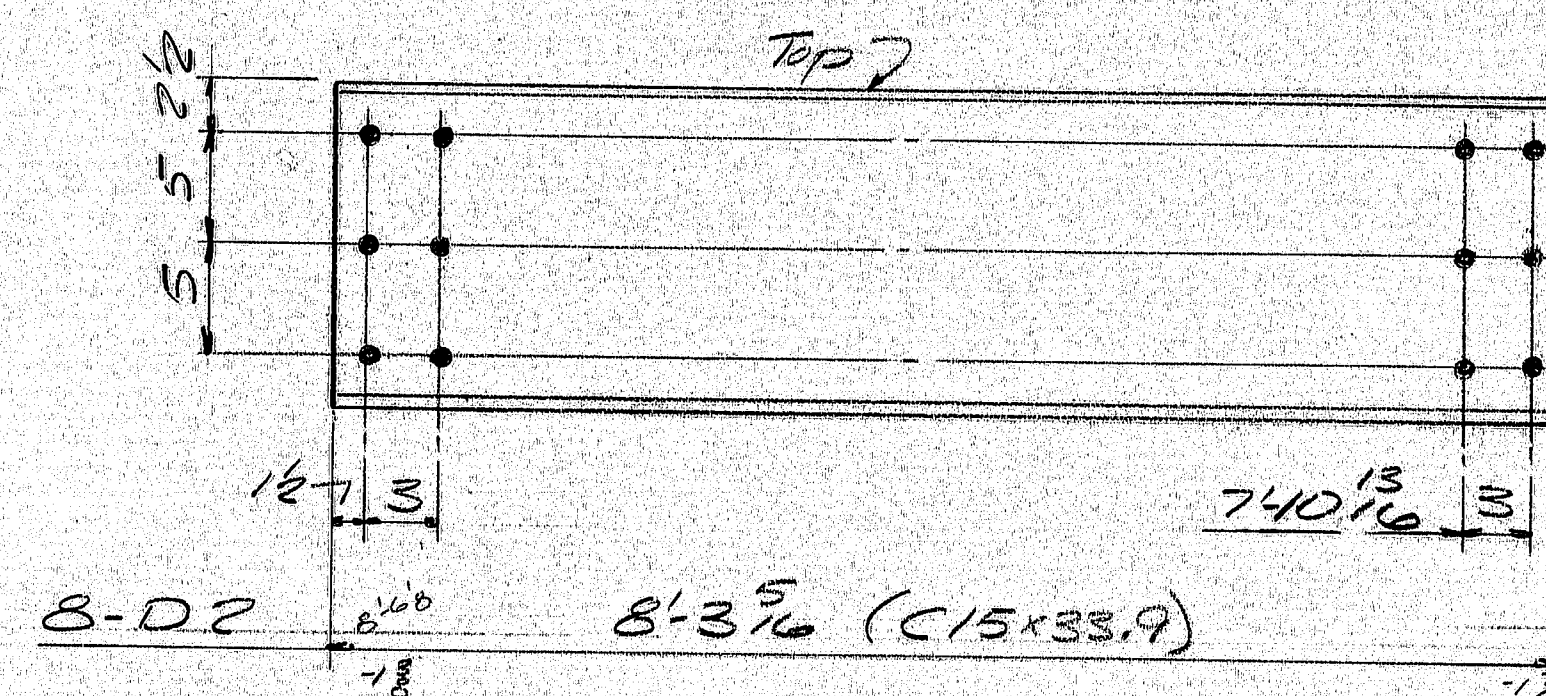
HOLES: ☐ 13/16 ☒ 15/16 ☐ ☐ Unless Noted ☐ None

PAINT: ☐ None ☒ Shopcoat ☐ Galv. After Fab. ☒ As Noted

SPECIAL PAINT: CARBID ZINC 14 PER STATE OF MAINE SPEC.

SPECIAL CLEANING: ☒ Blast Clean ☐ None SSPC - SP6

REV. 1-1-74		STRINGERS & DIAPHRAGM PLATES	
APPROVED:		<i>Bancroft & Martin Inc.</i> <i>South Portland, Maine 04106</i> JOB: <i>MARSH STREAM BRIDGE</i> <i>PROSPECT, MAINE.</i> CUSTOMER: <i>REED & REED</i> DESIGNER: <i>MAINE DEPT. OF TRANS.</i>	
PRINT DIST.			
<i>2P</i> 11-27-78	APP.		
<i>3P</i> 1-15-79	FAB.		
<i>2P</i> 1-15-79	P & F.		
<i>2 Sepia</i> 1-15-79	P & F.		
REV. <input type="checkbox"/>		ORDER NO.	
CHECKED <i>12-27-78 RSM</i>		JOB NO.	
DRAWN <i>12-28-78 HLL</i>		DRAWING NO.	
		REV.	

[illegible]

[illegible]